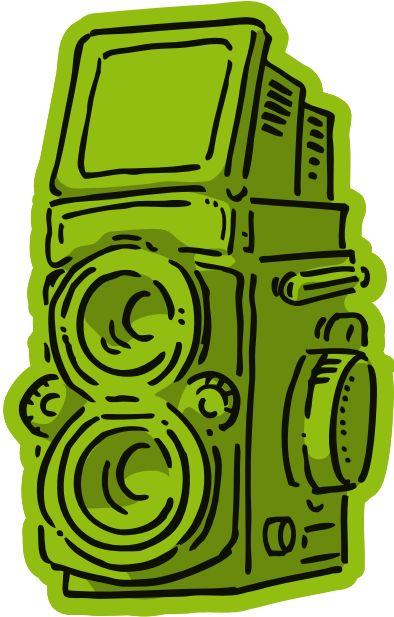
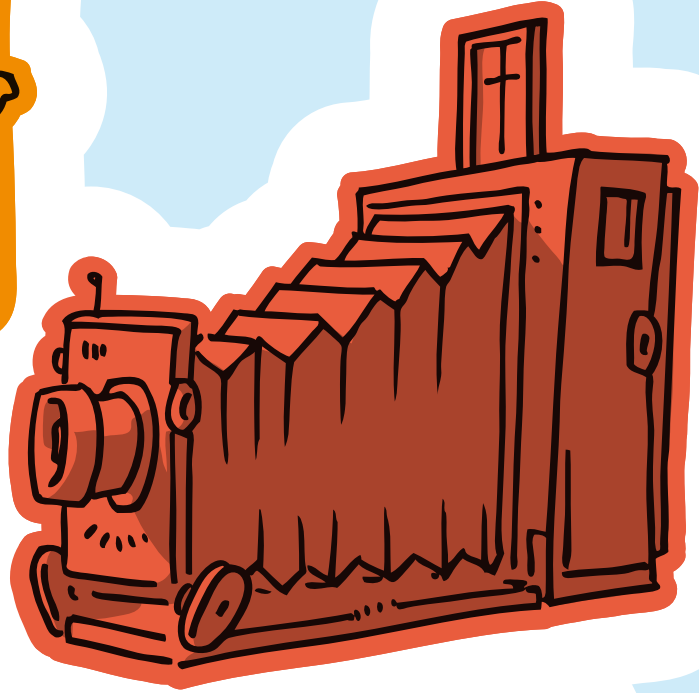
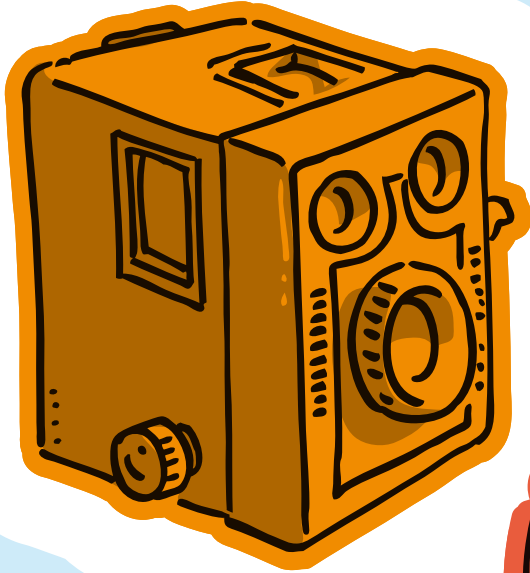


Fotomobile » Camera Mobile

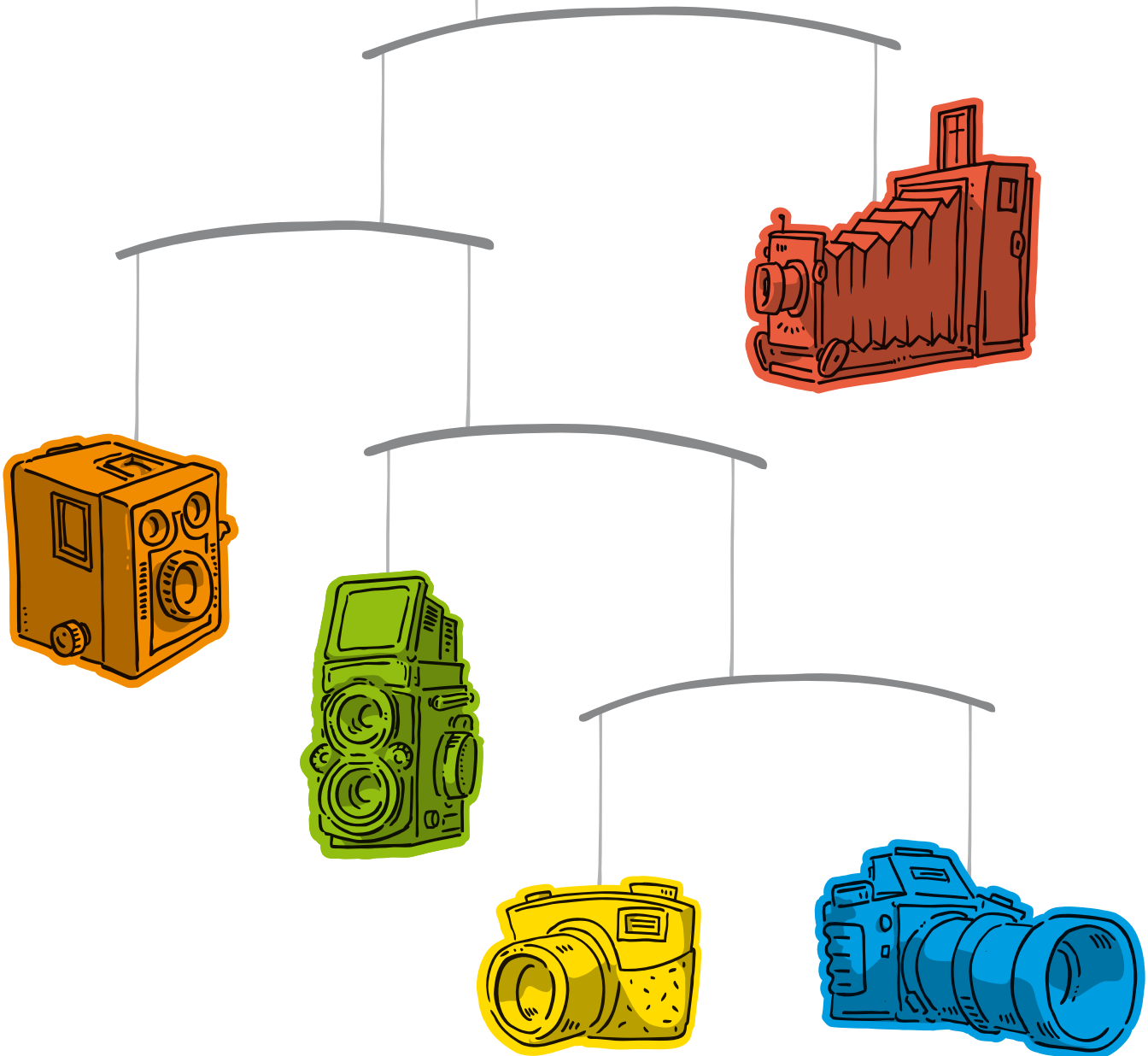


Material

- » 4 Drahtbügel (z.B. Blumendraht)
- » 40cm, 2 x 30cm, 20cm Bindfaden
- » verschiedenfarbiger Karton
- » Kleber

So wird's gemacht:

- » Vorlagen auf farbigem Karton ausdrucken
- » Entlang der gestrichelten Linien ausschneiden
- » Vorderseite auf passende Rückseite kleben
- » Dazwischen einen Faden mittig einkleben.
- » Die Fäden der fertigen Kameras an die Enden der Drahtbügel kneten.
- » Ausbalancieren, fertig!

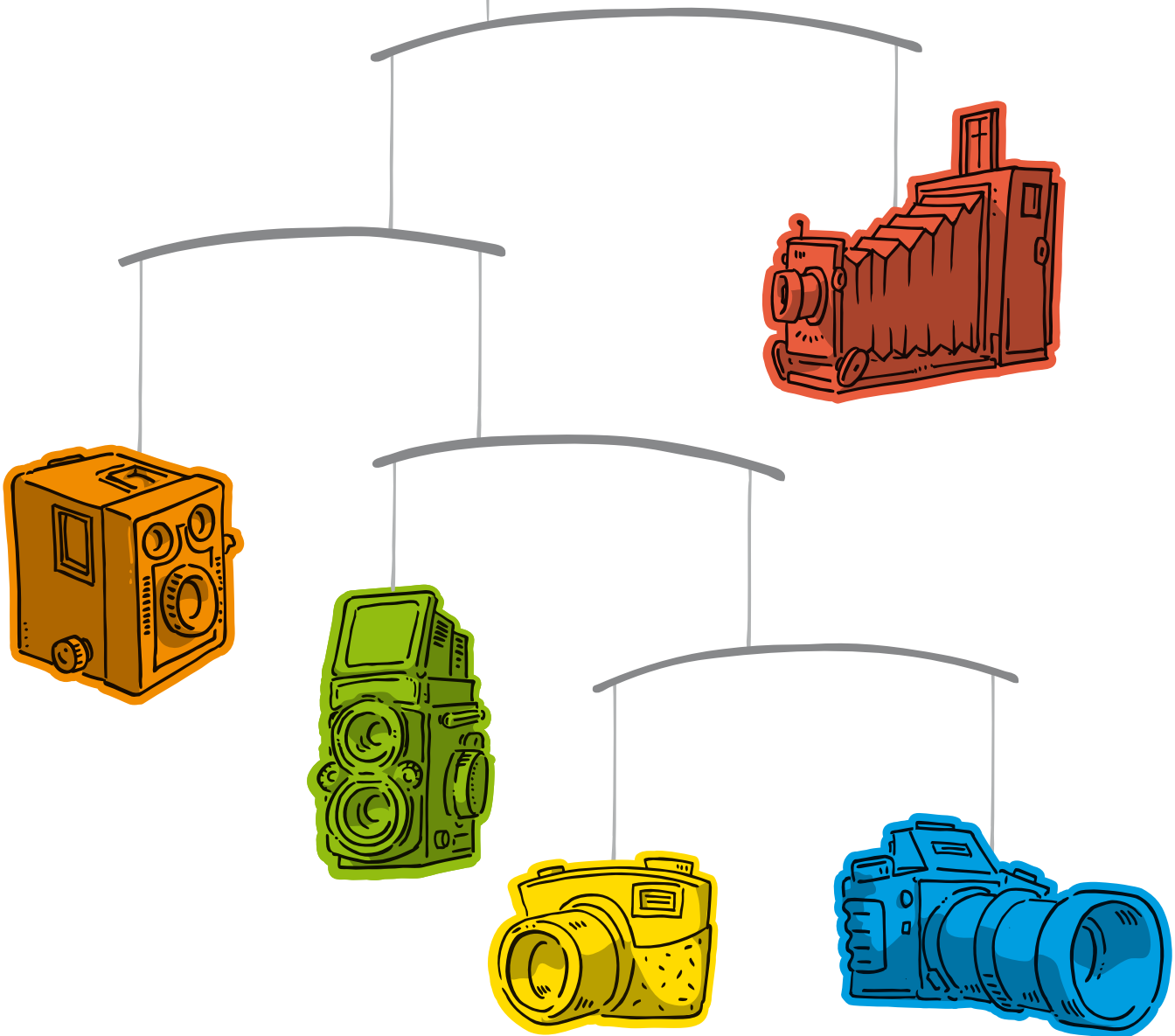


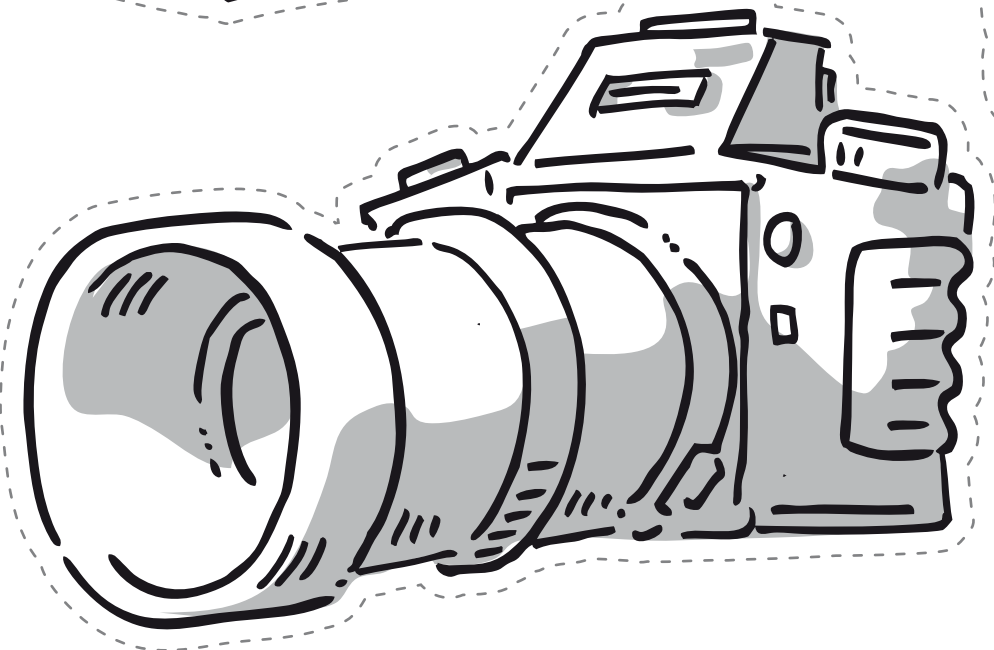
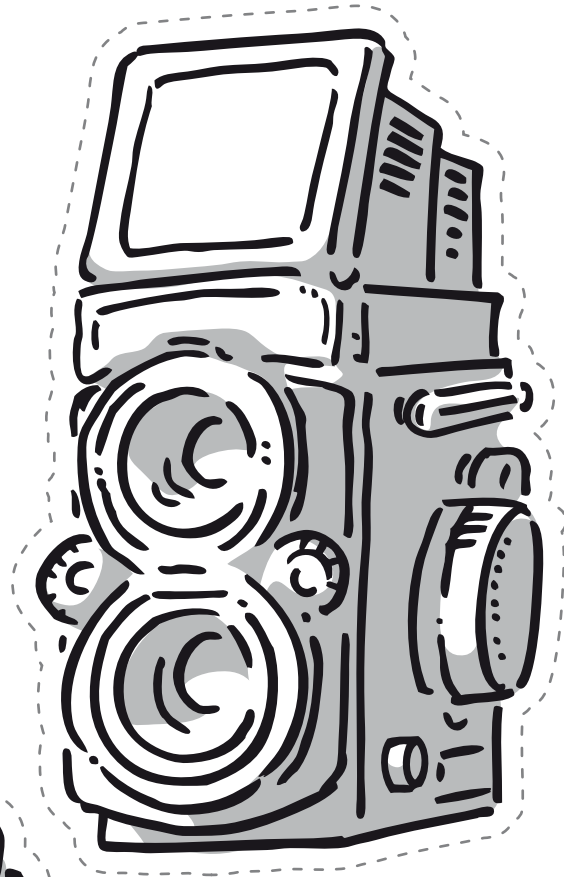
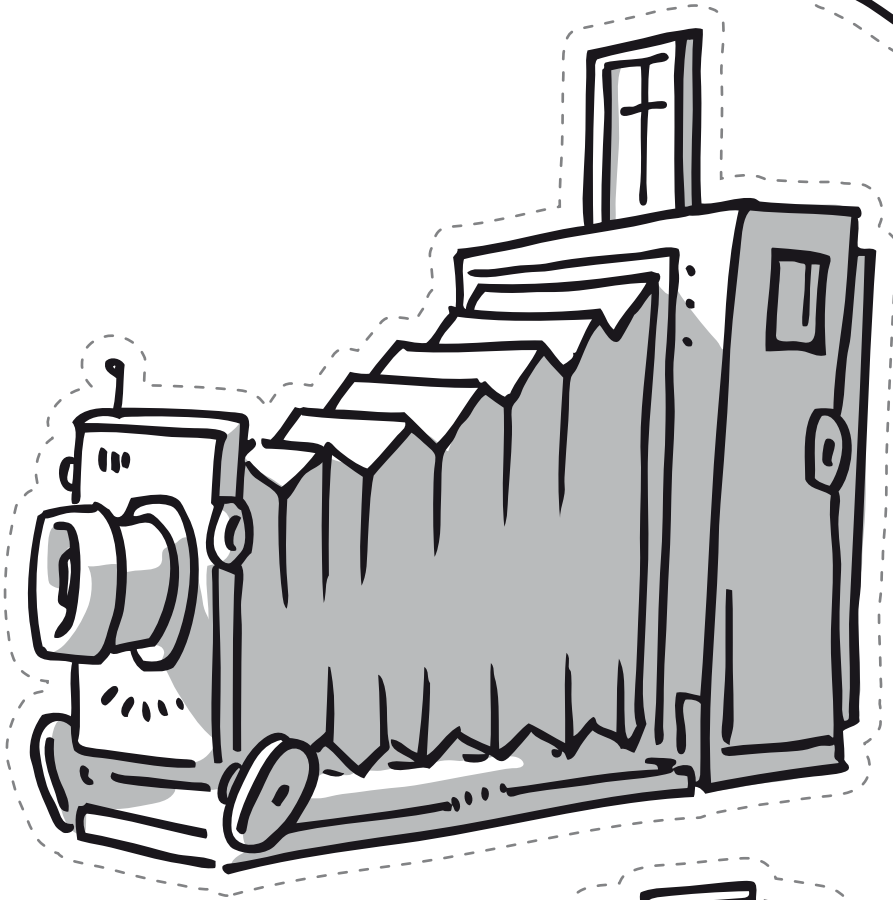
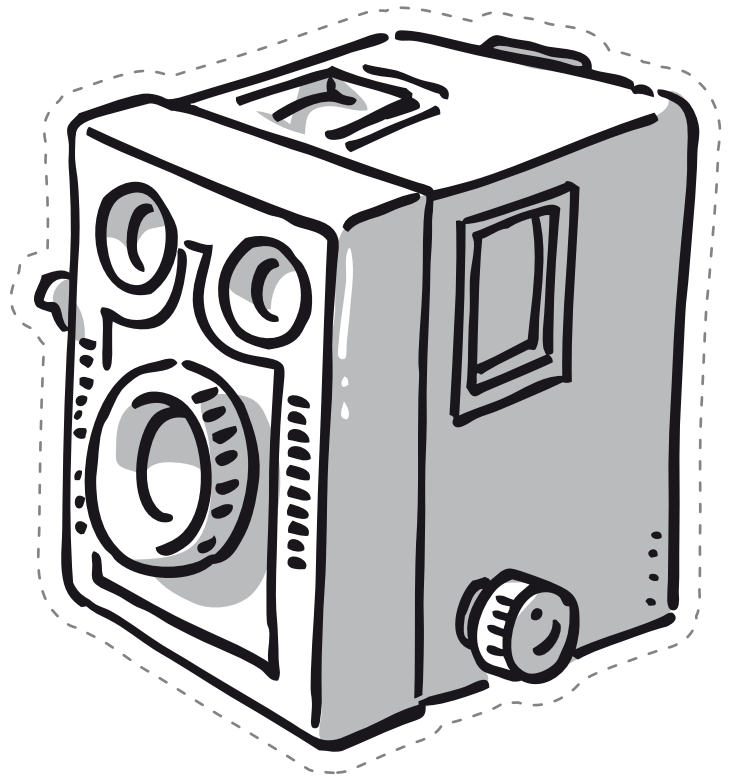
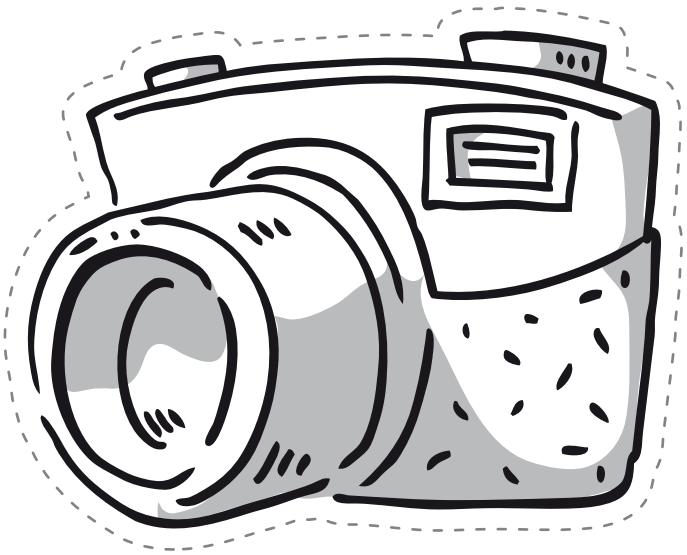
Things you need:

- » 4 wire hangers (e.g. floral wire)
- » 40cm, 2 x 30cm, 20cm twine
- » Cardboard in different colours
- » Glue

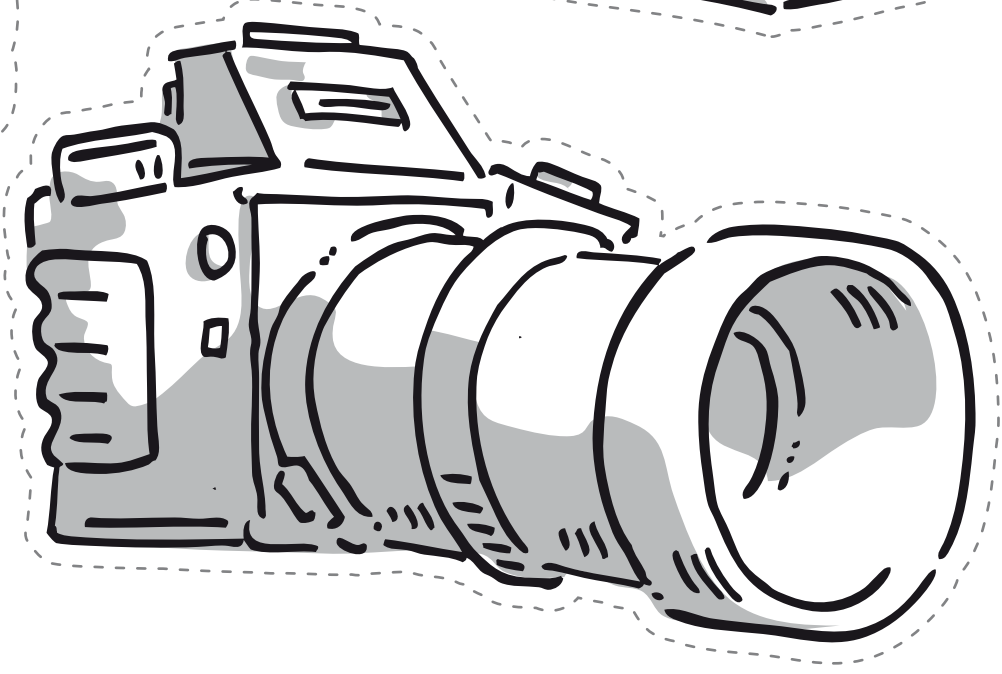
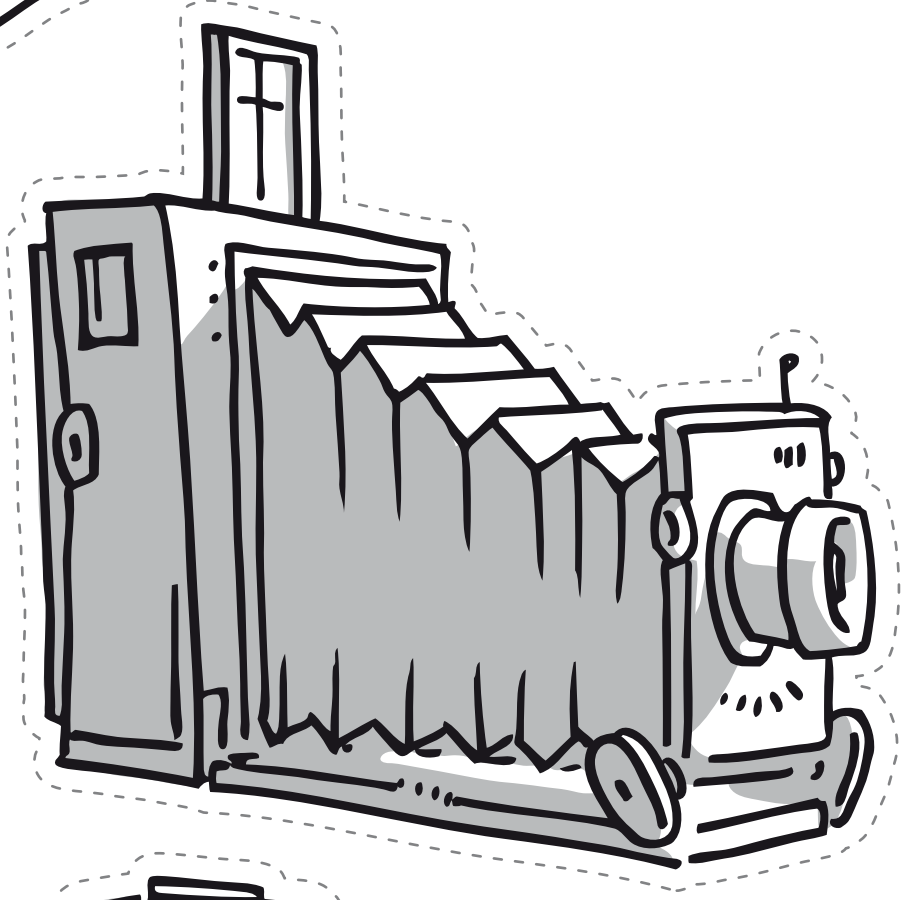
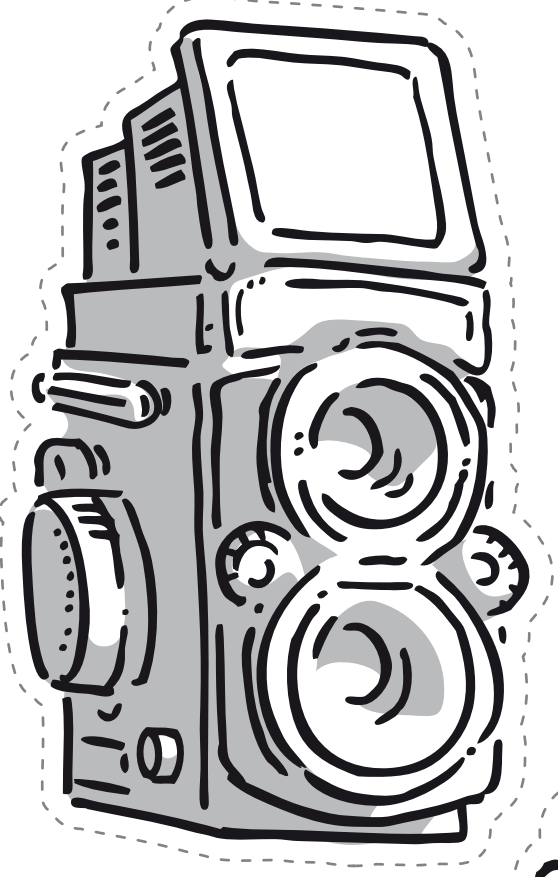
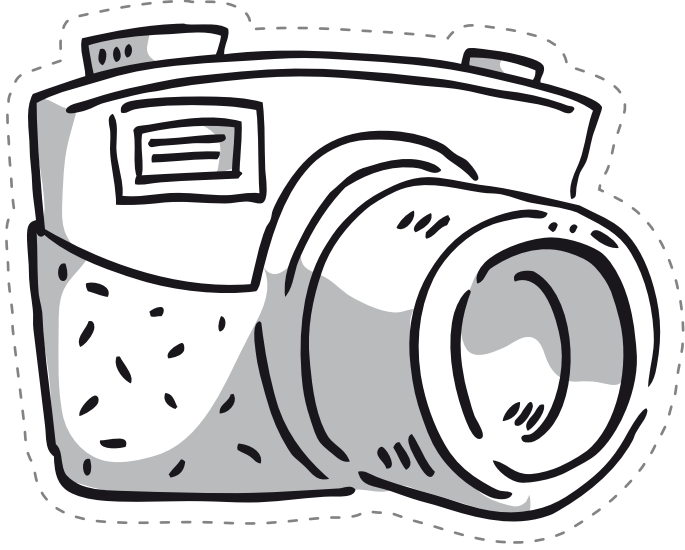
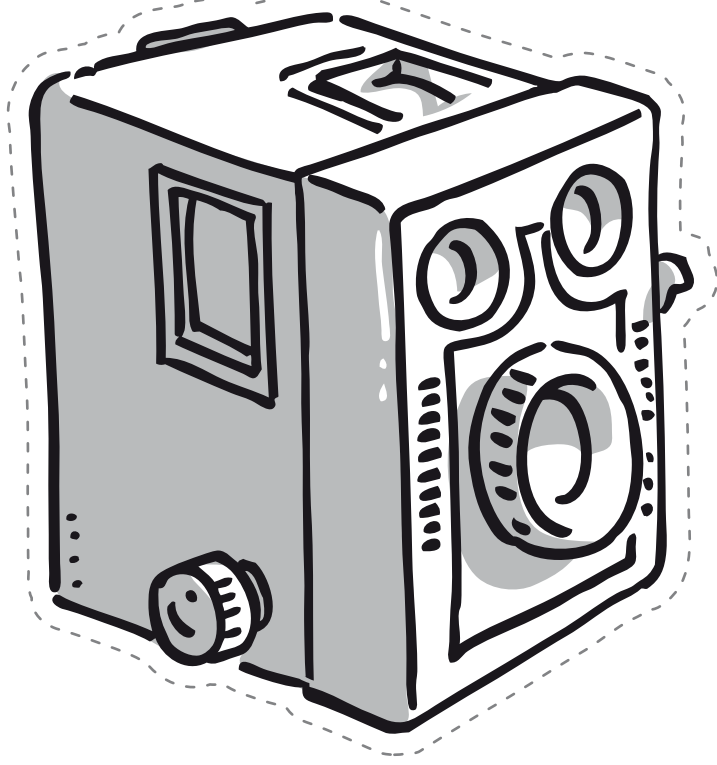
This is how you do it:

- » Print the camera pieces onto different coloured cardboard
- » Cut out the camera pieces along the dotted lines
- » Glue together the matching front sides and reverse sides
- » Glue a piece of twine in-between the front and reverse side of each camera; make sure that the twine is in the centre position of the camera
- » For each camera, knot the twine to the end of a hanger
- » Bring into balance - that's it!





Vorderseite
Front Sides



Rückseite
Back Sides

PROPHOTO
News · Fakten · Analysen · Wissen

www.prophoto-online.de

© Prophoto GmbH

Idee, Illustration und Gestaltung: Claus Ast
Für Fehler in der Anleitung wird keine Haftung übernommen.

Idea, illustration and design: Claus Ast
No responsibility is accepted for errors in the instructions.